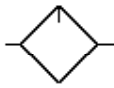


Excelon modular system

L72, L73, L74 Lubricators

G $\frac{1}{4}$ to G $\frac{3}{4}$



Excelon design allows in-line or modular installation

Quick release bayonet bowl.

Flow sensor provides a nearly constant oil/air ratio over a wide range of flows

Highly visible, prismatic liquid level indicator lens on metal bowls

All round (360°) visibility of sight-feed dome for ease of drip rate setting

Micro-fog and oil-fog

Technical data

Medium:

Compressed air

Maximum inlet pressure:

10 bar (transparent bowl)

17 bar (metal bowl)

Start point:

L72C 0,47 dm³/s

L72M 0,94 dm³/s

L73 0,71 dm³/s

L74 0,94 dm³/s

Minimum flow required for lubricator operation at 6,3 bar inlet pressure

Ambient temperature:

Transparent bowl: -20° to +50°C

Metal bowl:

-20° to +65°C (L72)

-20° to +80°C (L73 & L74)

Consult our Technical Service for use below +2°C

Materials

L72M, L72C:

Body: zinc

Transparent bowl: polycarbonate

Metal bowl: zinc

Liquid level indicator lens (metal bowl): transparent nylon

Sight-feed dome: transparent nylon

Elastomers: neoprene, nitrile & Geolast

L73M, L73C, L74M, L74C:

Body: aluminium

Transparent bowl: polycarbonate

Guarded transparent bowl:

polycarbonate with steel guard

Metal bowl: aluminium

Liquid level indicator lens (metal bowl, 0,1 & 0,2 litre) transparent nylon (Pyrex optional)

Sight-feed dome: transparent nylon

Elastomers: neoprene & nitrile



L72C



L73M



L74M

Port size	Flow (dm ³ /s) #	Bowls	Bowl capacity (litre)	kg	Model *	Service kit
G1/4	24	Transparent	0,06	0,49	L72M-2GP-ETN	4382-500
G1/4	50	Transparent	0,1	0,49	L73M-2GP-EPN	4382-600
G3/8	24	Transparent	0,04	0,49	L72M-3GP-ETN	4382-500
G3/8	64	Transparent	0,1	0,55	L73M-3GP-EPN	4382-600
G3/8	50	Guarded transparent	0,2	0,60	L74M-3GP-QPN	4382-700
G1/2	64	Transparent	0,1	0,55	L73M-4GP-EPN	4382-600
G1/2	70	Guarded transparent	0,2	0,60	L74M-4GP-QPN	4382-700
G3/4	70	Guarded transparent	0,2	0,90	L74M-6GP-EPN	4382-700

#Typical flow with 6,3 bar inlet pressure and 0,5 bar pressure drop.

* Models listed in the order table must not be located downstream of frequently cycling directional control valves. Order the optional bi-directional oil-fog lubricator for use under such conditions.

Options selector

Series	Substitute	Options	Substitute
72*	2	Low oil level switch** (74)	L
73*	3	None	N
74	4	Pyrex dome#	P
		Quick fill nipple (73, 74)	Q
Type	Substitute	Bowl	Substitute
Oil-fog	C	Metal with liquid level indicator	D
Micro-fog	M	Metal with Pyrex sight glass	R
Port size	Substitute	Transparent without guard (72, 73)	T
1/4 (72 & 73)	2	Long transparent without guard (72)	L
3/8	3	Long transparent with guard (72)	W
1/2 (73 & 74)	4	1 litre metal with Pyrex liquid level indicator‡ (74)	A
3/4 (74)	6	0,2 litre transparent with guard (73, 74)	P*
Threads	Substitute	Drain	Substitute
PTF	A	Closed bottom	E
ISO Rc taper	B	Manual 1/4 turn	Q
ISO G parallel	G	Remote fill device	R
Air flow direction	Substitute		
Bi-directional (74)	E		
Uni-directional	P		

* Not available with 1 litre bowl

* Not available with 1 litre bowl

** Low oil level switch requires 1 litre bowl, type 'A' at 9th digit.

Pyrex dome used only with bowl type 'A' or 'R' at 9th digit.

‡ Pyrex liquid level indicator used only with option 'P' at 10th digit.

Excelon modular system

L72, L73, L74 Lubricators

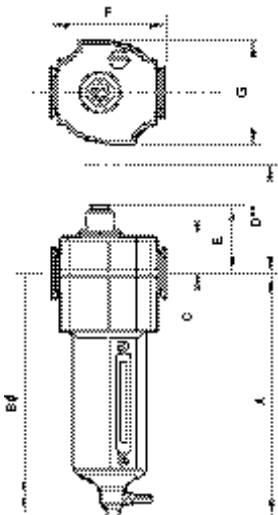
G $\frac{1}{4}$ to G $\frac{3}{4}$

Accessories

Series	Port size	Wall mounting bracket	Quikmount pipe adaptors (quantity of 1)	Quikclamp	Quikclamp and Quikclamp wall bracket	Remote fill kit	Quick fill nipple	Tamper resistant snap-on cap for lubricator sight feed dome	Level switch ‡
L72	G1/4	4224-50	4215-08	4214-51	4214-52			4050-89	
	G3/8		4215-09		4213-89 *				
L73	G3/8	4424-50	4315-09	4314-51	4314-52		18-011-024	4050-89	
	G3/8		4315-10		4313-50*				
	G1/2		4315-11						
	G3/4		4315-12						
L74	G3/8	4324-50	4315-10	4314-51	4314-52	18-027-984	18-011-024		18-023-610**
	G1/2	4323-51**	4315-11		4313-50*				
	G3/4		4315-12						

*Bracket only. **To fit 1 litre bowl version # Pack of 10.

‡ Field conversion

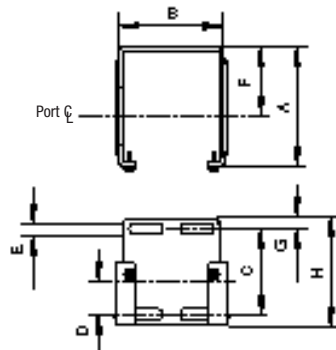


** Optional Pyrex sight-feed dome.

Minimum clearance required to remove bowl.

Series	A	B	C	D	E	F	G
72	110	191	19	64	41	50	48
73	156	255	25	70	47	68	62
74	177	276	25	68	47	80	74

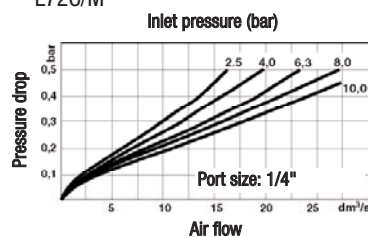
Bracket mounting



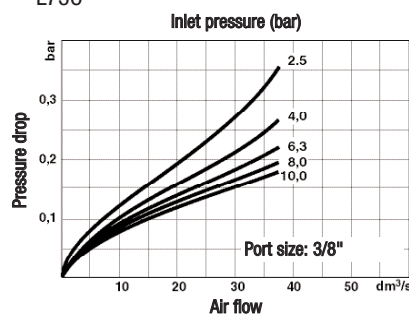
Series	A	B	C	D	E	F	G	H
72	60	42	39	18,6	4	38	6	51
73	67	60	48	19	7	38	6	61
74	79	69	50	20	5	51	6	61

Flow characteristics

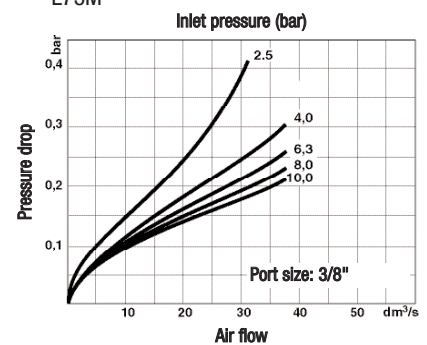
L72C/M



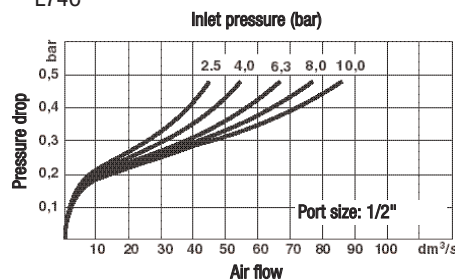
L73C



L73M



L74C



L74M

